



Three small bowls

1. West end blend
2. Yellow slip middle
3. Orange slip petals
4. Clear glaze
5. Wax resist
6. Amber glaze

Notes: Not a great combination, plus the petals cracked probably dried different rate



Two decorative bowls with flowers on rim

1. West end blend
2. Milky way quick dip
3. Brushed more milky way on petals
4. Wax resist petals only
5. Quick dip in emerald for one, and in turquoise the other

Notes: Fantastic all around. The turquoise over milky way is the most beautiful turquoise



One bowl

1. West end blend
2. Opal over opal

Notes: It is a pretty powder blue but not spectacular



One bowl

1. West end blend
2. Albany over amber

Notes: Not metallic. Quite rough for some reason. Should have been amber over albany



One bowl

1. West end blend
2. Oribe over emerald

Notes: Dark green



One bowl

1. *West end blend*
2. *Opal over raspberry*

Notes: carved lines makes top glaze pool in lines – in this case the opal



One groovy cup

1. *B mix*
2. *Turquoise over oribe*

Notes: Absolutely gorgeous. The turquoise pools in the lines and looks dark blue



One square cup with carved fish And lines

1. *B-mix*
2. *Opal over raspberry*

Notes: carved lines makes top glaze pool in lines and in carved bits – in this case the opal



One carved dragonfly square cup

1. *B mix*
2. *Opal over emerald*

Notes: Beautiful. Contrast between the emerald and opal where the carving is. Really makes it stand out. The carvings aren't smooth, so they stand out even more.



One wide cup with leaves

1. B mix
2. Raspberry over turquoise

Notes: Very purple. Some turquoise peeks through. Doesn't make the carving stand out. Raspberry on top makes it turn out purple. Turquoise over raspberry is probably better



Small dragonfly sculpted bowl

1. B mix
2. Dragonfly – brushed on oribe on head and body, then turquoise, wax resisted
3. Dipped in milky way
4. Brushed some milky way on wings, wax resisted
5. Dipped in turquoise

Notes: Gorgeous, happy with the whole thing



Small dragonfly sculpted bowl

1. B mix
2. Opal over emerald

Notes: Still my favourite combination for making reliefs stand out. Love it! The dragonfly is a little choppy-looking, could use smoothing





2 Medium bowls with dragonfly carved inside

1. *B mix*
2. *Opal over oribe*
3. *After the oribe, I brushed two coats of blancmange on the wings, but it barely shows*

Notes: Very beautiful. The opal pools in the middle a little and there's lots of movement on the outside. Got a bit thick at the bottom. Looks a bit like jeans



Planter bowl with saucer

1. *B mix*
2. *Randeesh over oribe*

Notes: Beautiful metallic brown colour & gold. I wax resisted a dragonfly on the side but it did not come out



Hedgehog bowl

1. *B mix*
2. *Turquoise over oribe*

Notes: Really makes the carvings stand out. Pretty colour but I liked it better on the grooved cup. I wonder what oribe over turquoise would look like



Hedgehog bowl 2

1. *B mix*
2. *Randeesh over clear*

Notes: Beautiful warm brown colour just a little metallic, but quite rich and the sides are really gorgeous. Carving does not show much. Try clear over randeesh



Snake bowl

1. *B mix*
2. *Raspberry over oribe*

Notes: Just like anything else, the raspberry on top makes it quite purple. Not bad though. The sides lost glaze I don't know why





Bird bowl

1. *B mix*
2. *Little birds sculpted and attached with scoring to rim. Little eyes carved in and wing lines.*
3. *Dipped in milky way*
4. *Turquoise brushed on birds 3 or 4 times, and swirled in the centre of the bowl.*

Notes: The eyes filled in with milky way (milky way does that). I had to pen them in. The turquoise is beautiful as usual over milky way. Eyes should be done with a dot of slip.



Elephant and palm tree cup

1. *B mix*
2. *Carved elephant & palm*
3. *Amber over moss*

Notes: the carving really stands out and there are a lot of light areas around the carvings and edges. Put less of a base on and add a bevelled edge to the bottom and just a bit of base above the bevelled edge. I would have liked it to be lighter and more sandy looking. The elephant is cool.



Hedgehog bowl

1. *B mix*
2. *Little hedgehogs sculpted and eyes & hair made with needle tool.*
3. *Albany over light blue*
4. *I brushed albany on the hedgehogs a few times.*

Notes: Less base and bevel base & put wax resist on evenly. For some reason the albany really ran off of the blue. According to Atsuko, most people put light blue over albany! I kind of like it though. The eyes filled in. It would be better to make little round clay eyes for the birds and the hedgehogs I read the samples wrong – it was supposed to be light blue over albany!





Fish bowl

1. B mix
2. Bowl with a rim
3. Fish carved around rim
4. Midnight blue over emerald
5. I dipped lightly in midnight blue

Notes: It's a beautiful bowl.

Especially the carvings. The green of the emerald green only shows distinctly in the sun (bottom picture)

It's subtle, but a beautiful dark not quite pure blue colour





Dragonfly bowl

1. B mix
2. Four dragonflies carved on inside
3. Nougat over emerald green

Notes: The colour is nice – very matte. It's not outstanding though

Grapefruit dishes

1. B mix
2. Carved flowers
3. Light blue over albany

Notes: Gorgeous colours, natural looking, highlight the carvings nicely. The large one with the deeper groove is better for grapefruit as it holds it in the middle. I made the bottom very neatly and it looks good.





Grooved cup

1. *B mix*
2. *Deep grooves*
3. *Randeesh over turquoise*

Notes: It runs at the bottom, kind of unsightly. Looks weathered, greeny, mossy, tarnished, metallic looking.

I think that shorter dips may alleviate the running, try turquoise over randeesh



Ladybug cups

1. *B mix*
2. *Carved ladybugs, flowers*
3. *Made handles with handle tool*
4. *Scored and attached handles when trimming*
5. *Randeesh over moss*

Notes: The reason it turned out ugly is because I have been reading the samples the wrong way all along! The glazes written down the side are the first dip, and the ones on the top the second!!



Gecko on the edge

1. *B mix*
2. *Rolled out a long tube of clay, then rolled the tail thinner. Squeezed and fashioned the head. Put two little eyes on. Made the legs separately and smoothed them on. The toes if just flattened and separated the end of the leg. I draped the tail over the end*
3. *One dip in milky way. Then I waxed a ring on the eye, and a few spots, but they mostly filled in, with just some white specks. Then I brushed the gecko with emerald a couple of coats, and opal a couple of coats. The colours are a beautiful blend, mostly light blue, with some green. They pooled together nicely probably because I didn't wait for the glazes to dry completely before adding other layers.*

Notes: I scored both the bowl and the gecko to adhere it to the bowl.



Gecko sculpture

1. *B mix*
2. *Rolled out clay & rolled tail thinner. Flattened body a bit, shaped the head, made legs separately & smoothed on.*
3. *Criss-crossed back.*
4. *Put eyes on the side with a piece of clay and then put a hole in the middle. Blue colour pooled in the hole perfectly.*
5. *Wax resisted underneath which worked perfectly. I didn't have to leave too much on the sides at all!*
6. *Light blue over albany.*

Notes: Gorgeous!! He's going on the wall!





BC Bio cups for speakers

1. B mix
2. Trimmed & put Maria VCC on bottom
3. Carved out a flat dragonfly & scored it and cup and attached with magic water
4. Carved BC Bio 2016 and name on the other side
5. Some names got filled in because I dipped for too long.

Notes: Very well received. In future if names carved or other carving, dip lightly.





Gecko cups

1. *B mix*
2. *Formed handle and let sit*
3. *Formed gecko & let sit*
4. *Attached both with scoring and magic water*
5. *Smoothed with bamboo stick*

Notes: I must have dipped the whole cup in milky way, then brushed on opal over emerald on the geckos very very carefully!





Alice in Wonderland cup

1. *B mix*
2. *I don't remember the glazes, but it looks like amber and turquoise*



Ammonite hand built small plate

1. B mix
2. Traced an ammonite picture onto trace paper
3. Put black slip on plate
4. Traced the ammonite with a wooden tool with the trace paper
5. Took off the trace paper and carved over lines a little deeper
6. Something under amber – a little too dark, but nice

Notes: I put 2 or 3 coats of black slip in opposite directions

Green flower hand built plate

1. B mix
2. Black slip
3. Used already done tracing paper & traced into slip and then with metal tool
4. Something under oribe
5. A very lovely green, although a little dark

Notes: I didn't smooth the sides quite enough. They should be smoothed a lot with a sponge.



Hedgehog salt & pepper shakers

1. B mix – used $\frac{3}{4}$ lb of clay
2. Centre, flatten and angle out
3. Put hole in middle all the way to the bat
4. Press down beside hole and bring up centre
5. Make into a funnel, using small round stick for opening (must be small or too much salt)
6. Pull up sides leaving the top third thicker to collar
7. Collar the top and pull up a bit, may have to use needle tool to take off the top
8. Put black slip on the eyes and end of nose
9. When quite wet, Added a nose, eyes & four feet (sitting up hedgehog)
10. When greenware, scoop out funnel to pour salt in at the bottom (but not too much – could make a hole). Added hair with needle tool and scooped out with another tool
11. Matte white dip, waxed hands & feet. Amber dip for salt, and Albany for pepper. Turned out great.

Notes: Watched a few you tubes to get it right.



Diamond-backed gecko

1. *B mix*
2. *Rolled out clay, thinner tail.*
3. *Dipped in milky way*
4. *Brushed milky way spots inside diamons and on tail*
5. *Wax resist on the spots*
6. *Brushed emerald on body and legs & opal just on body and tail*

Notes: Should leave middle thicker before flattening, and head not so long. The front legs should go back from body and then bend forward to feet. The leg broke because glaze stuck to the shelf. Peter fixed with copper wire



3 flower bowl and 3-sided small cup – also made a largish bowl the same way

1. *B mix*
2. *Attached flowers with scoring and magic water*
3. *Dipped in milky way*
4. *Brushed milky way on petals*
5. *Wax resist on petals*
6. *Dipped in turquoise & brushed onto flower button*



Diamond-backed gecko pal for the first one

1. *B mix*
2. *Rolled out clay, thinner tail.*
3. *Randeesh over oribe – great metallic lustre*

Notes: Should leave middle thicker before flattening, and head not so long. The front legs should go back from body and then bend forward to feet.



Amphibian Butter Dish

1. Made bottom and top at the same time with a measuring caliper
2. Turquoise slip on the very bottom after trimming
3. Made frog to be handle on lid. Let them dry a bit together. Sprayed and scored top & frog to attached (but the frog fell off after bisque-firing)
4. Glazed lid and plate opal/emerald (or the other 'way round)
5. Glazed frog raspberry/opal)

Notes: Should leave middle of frog thicker before flattening, and head not so long. The front legs should go back from body and then bend forward to feet.





Elephant cups – gave to Gaby & Teresa

1. *Handles are a little small – one finger handles*
2. *Carved an elephant head outline*
3. *Amber/opal (I believe)···very, very nice.*





Vines on a Teapot & flowers on cups

1. Made pot, lid, handle & spout
2. Spout on the wheel
3. Scored and thinned the bottom of spout so no drip
4. Decorated with flowers and vines and leaves
5. Drew edge tool along the edge of the vines for contrast
6. Steely green/blancmange
7. Forgot to wax resist the flowers so they would be white
8. Used green stain for the leaves, and stems, but it turned blue for some reason.
9. Two little, light teacups with a flower, stem and leaf.

Notes: I thought the steely green was too thick so I brushed much of it with my finger. Just need to leave it alone...it's beautiful. Definitely make the flowers white. I made a simpler lid as well which actually looks better.





Dragonfly soy bowls

1. B-mix
2. Carved & trimmed
3. Colour is largely green, not that interesting
4. Although the dark does pool very nicely into the carving
5. Turquoise/oribe



Bicycle and clothesline cups

1. B-mix (like all others unless stated otherwise)
2. Handles are great because they are squarish, and big enough and sturdy
3. Opal/raspberry
4. The glaze really moves a lot.

Notes: Be careful of trimming a nice pooling area at the base...not too big so you notice it. Maybe if you trimmed the bottom so that it slants in at the edge in such a way that you can't really see the unglazed part of the cup



Flower gravy boat (or cream dispenser)

1. *I fashioned the top when it was greenwear.*
2. *The handle is too small around and round.
Slippery*
3. *Opal/emerald – my favourite combo. Just gorgeous.*



Plain bowl

1. *After trimming, turned right side up and brushed glaze on the inside – turquoise I think.*
2. *Emerald/steely green – just green really*
Notes: Should leave the inside with one coat of glaze and dip so that outside is different than inside.

Also, maybe steely green/opal would be better? No idea.



Test bowl – inside – not sure of the clay

Inside from L to R, underglazes – leaf green, bluegreen, purple, red, pink. Spectrum I think. – 3 coats each

From the bottom right corner clockwise:

Clear, opal/clear, turquoise/opal, turquoise

The two glazes on top were too dark, but the one turquoise & clear showed them off well. You can also put the underglaze on top (revelation).



Test bowl – outside – not sure of the clay

Inside from L to R, stains: Red iron oxide, yellow ochre, cobalt carbonate, cobalt oxide, turquoise, crimson, yellow – two coats each

Teal underglaze stamp (native fish)

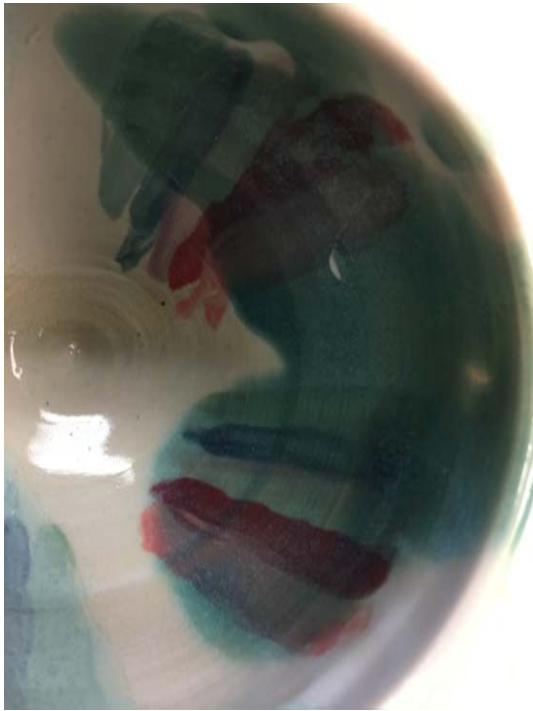
Black stamp (flowers)

Glazes: (same as inside)

Clear, opal/clear, turquoise/opal, turquoise

The two glazes on top were too dark, but the one turquoise & clear showed them off well, the clear in particular. I found out afterwards that the stains are supposed to go on top. Apparently they run a little.





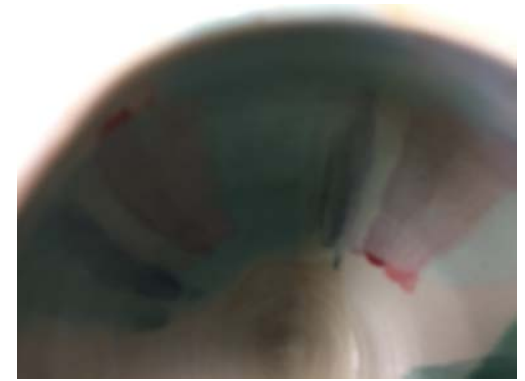
Test small bowl – inside – not sure of the clay

Inside from L to R, underglazes – leaf green, bluegreen, purple, red, pink. Spectrum I think. 3 coats each

*Glazes $\frac{1}{2}$ blancmange, $\frac{1}{2}$ milky way
Cross glazes $\frac{1}{2}$ steely green $\frac{1}{2}$ turquoise*

I forgot to leave the milky way and blancmange by themselves, but bits of underglaze sticking out make me think they would look very nice with either over top.

The turquoise AND milky way is too obscuring, as is the steely green on the top



Test small bowl – outside – not sure of the clay

Inside from L to R, stains: yellow, crimson, turquoise, cobalt oxide, cobalt carbonate, yellow ochre, red iron oxide, 2 coats each.

*Teal underglaze stamp (native fish)
Black stamp (flowers)
Glazes: L blancmange, R. milky way*

Not sure about the stamps, I think they look okay, but may run a little with milky way. Or not.





Two little tea cups.

1. *B mix*
2. *Trimmed some grooves in bottom*
3. *Stained the flowers.*
4. *Left cup flowers from L to R are Robin's egg blue, coral, orange,*
5. *Right cup flowers from L to R are pink, peacock, and orchid*

Notes:

I stained under and over one dip in milky way. The stains I like are peacock blue and robin's egg, and the orchid is not bad.



Two little tea cups.

1. B mix
2. Made the rim wide – great for holding the cup
3. Stained the flowers and leaves over milky way
– one dip but a long dip
4. Left cup flowers from L to R are peacock, orchid,
fire engine red (underglaze)
5. Right cup flowers from L to R are yellow stain,
fire engine red underglaze, robin's egg stain
6. Both have celeste green leaves – a nice dark
green.

Notes: The rim being wide is nice. I need to be more careful when brushing the stain. The grooves help, just more patience.

Sgraffito bowl

1. *B mix*
2. *When greenware, brushed 5 or 6 layers of black slip on, letting it dry somewhat in between each layer*
3. *Carved bees freestyle*
4. *Scraped away the negative black slip with a flatish tool*
5. *After bisque-fire, glazed with clear only.*

Notes:

It was quite pointy and jagged inside because I didn't smooth it. Charmian suggested using one of those slightly abrasive dish sponges to smooth the inside. It's time-consuming but the result got tons of likes and comments on Facebook!





Coffee cup

1. B mix
2. Used my handle tool to cut out handle
3. Quick midnight blue dip over long opal dip

Notes:

I love this combination. Someone said it reminded them of the old campfire tin cups.



Practice stains for matching my Italian teapot

1. B mix
2. Rolled flowers on the handle
3. Dipped in milky way
4. Stains: cobalt carbonate around rim, yellow stain, fire engine red, celeste green,
5. I think the lines on the handle are blue-green underglaze (matches the teapot)

Notes:

I tried to make very thin lines with my squeeze bottle, but the stain is too runny. It may work with underglaze. All the stains (except the celeste green) match the teapot very well.